

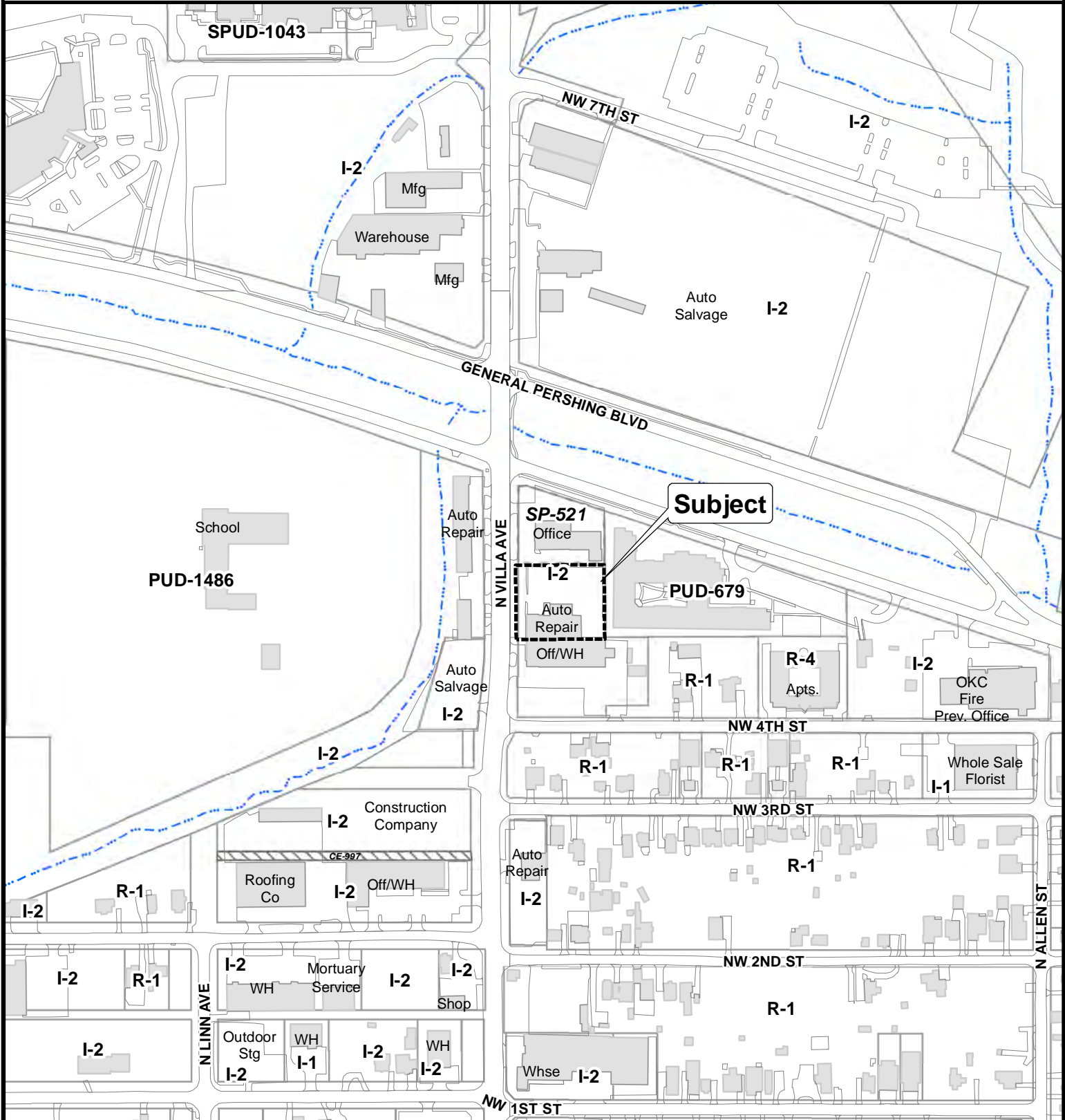
Case No: SP-599

Applicant: City Care, Inc.

Address: 520 N. Villa Ave.

Present Zoning: I-2

Proposed Use: (8250.7) Emergency Shelters and Feeding Sites



Note: "Subject" is Located approximately 2,264' South of NW 10th St.



The City of
OKLAHOMA CITY

Special Permit Application



0 150 300
Feet

City Care Medical Respite Shelter Special Permit Application

Program Description

City Care is proposing a 40-bed medical respite shelter for individuals experiencing homelessness who are being discharged from local hospitals and need a safe, stable place to recover from illness or injury. Medical respite is short-term residential care that allows individuals to rest, receive clinical oversight, and recover in a dignified environment when they do not require hospital-level care, but are too sick to recover on the streets or in a traditional shelter.

This program is not a drop-in or emergency shelter. Guests will arrive via referral from hospitals or medical providers and will have a specific medical recovery plan during their stay.

Number of Participants

The shelter will house a maximum of 40 guests at any one time. Each guest will be enrolled in the program with a defined length of stay, determined by medical need and recovery plan (average: 30–45 days).

Staffing and General Duties

The program will operate 24/7 with on-site staff at all times, including:

- Case Managers (Day): Coordinate discharge planning, service referrals, housing navigation, and benefits enrollment
- Medical Oversight (Day): Licensed Nurse on-site during daytime hours to monitor patient care and support medication management
- Shelter Advocates (24/7): Provide supervision, de-escalation, and trauma-informed support to ensure a safe and structured environment
- Facilities Staff: Ensure cleanliness, laundry service, food delivery, and general maintenance
- Staff-to-guest ratio will exceed 1:10 during daytime hours, with a minimum of two staff members on-site at all times, including overnight.

Participant Supervision and Behavior Expectations

All participants must agree to a code of conduct and follow behavioral expectations consistent with recovery and shared community living. The program is supervised 24/7, and guests must check in and out for any appointments offsite. No walk-up access is allowed—guests are admitted by referral only.

Security measures include:

- Controlled entry/exit
- Staff presence at all times
- Visitor policy limited to medical or casework personnel only
- Security cameras in common areas and exterior grounds

Mitigating Impacts to Surrounding Land Use

City Care is committed to being a good neighbor and minimizing any disruptions:

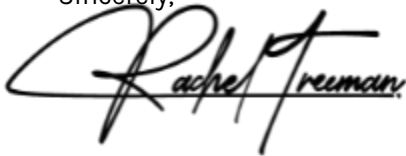
- Secure Entry: Guests cannot access the shelter unless formally enrolled and admitted. There is no loitering or open campus.
- Perimeter Design: Fencing and landscaping will support safety and privacy for guests and neighbors alike.
- Transportation Coordination: Most guests will arrive via hospital transport or staff coordination. No large influxes of foot traffic are anticipated.
- Waste and Noise Control: Facilities staff will manage all waste, and quiet hours will be enforced after 9:00 p.m.
- Good Neighbor Policy: We will proactively provide contact information to nearby property owners and remain available to address concerns as they arise.

Conclusion

This medical respite program provides a critical public health solution, aligning with best practices in health care and homeless services. It is intentionally designed to be low-impact, highly supervised, and dignified, helping reduce hospital readmissions, ease strain on emergency services, and support long-term stability for some of our community's most vulnerable neighbors.

I appreciate your consideration of this request, and welcome the opportunity to answer any additional questions you may have.

Sincerely,

A handwritten signature in black ink that reads "Rachel Freeman". The signature is stylized with a large, flowing "R" and "F".

Rachel Freeman

Chief Executive Officer

City Care



PRGRIN



CITY CARE

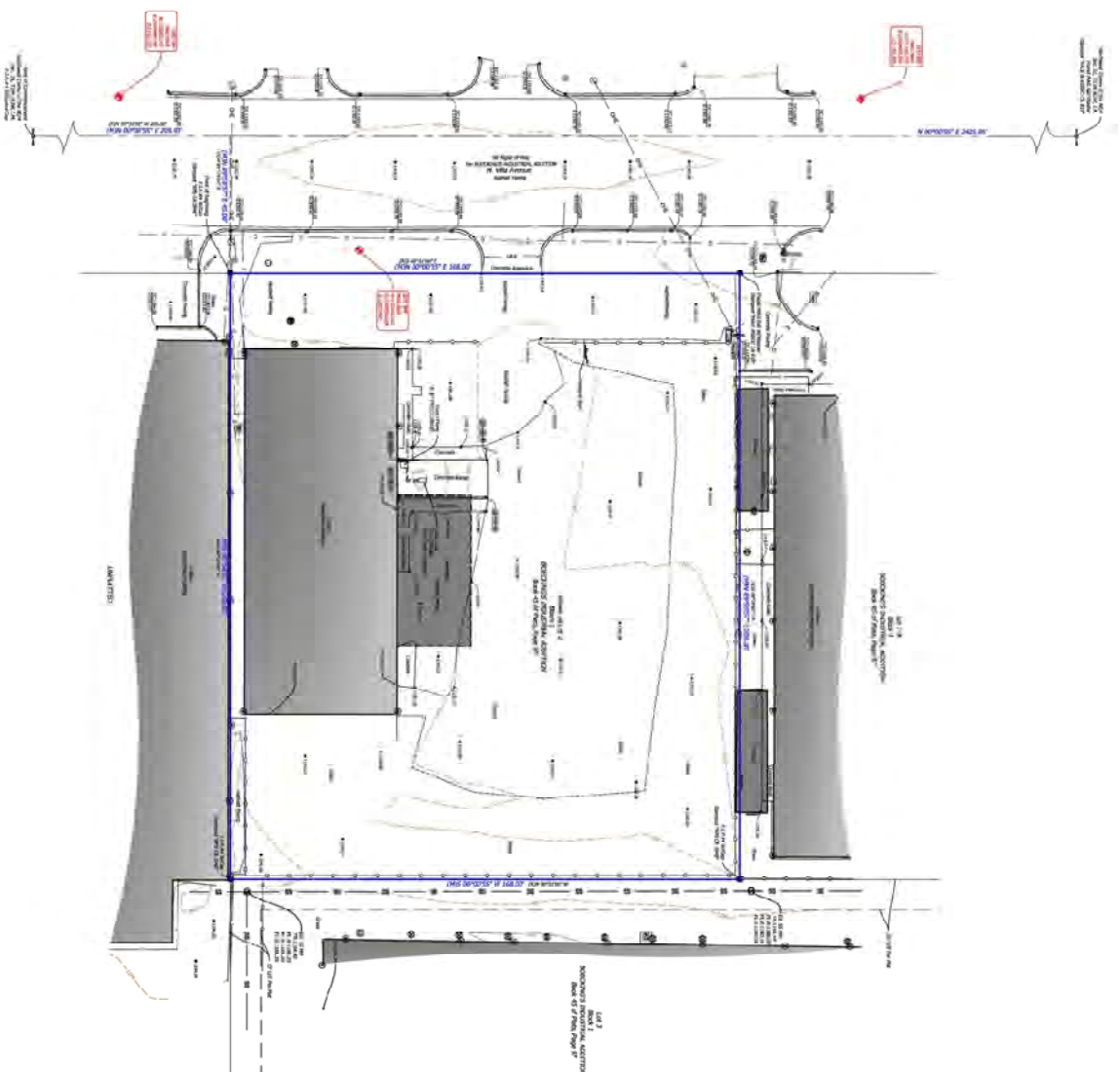
CITY CARE MEDICAL RESPITE FACILITY

Conceptual Design

520 N. Villa, Oklahoma City

17 April 2025









PROJECT SUMMARY

LEVEL 1 AREA (RESPITE):	7583 SF
LEVEL 2 AREA (OFFICE):	6475 SF
TOTAL AREA:	14,058 SF
TOTAL RESPITE BEDS:	20
TOTAL OFFICES:	18
TOTAL WORKSTATIONS:	1



CITY CARE

CITY CARE MEDICAL RESPITE FACILITY

Conceptual Design

520 N. Villa, Oklahoma City

17 April 2025





