



# City Manager Report

## The City of OKLAHOMA CITY

**NO:** 1938

**DATE:** FEBRUARY 28, 2023

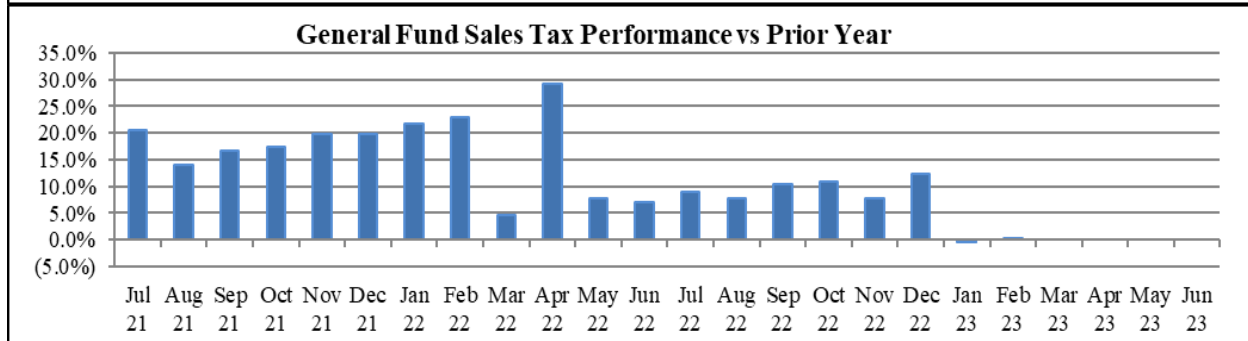
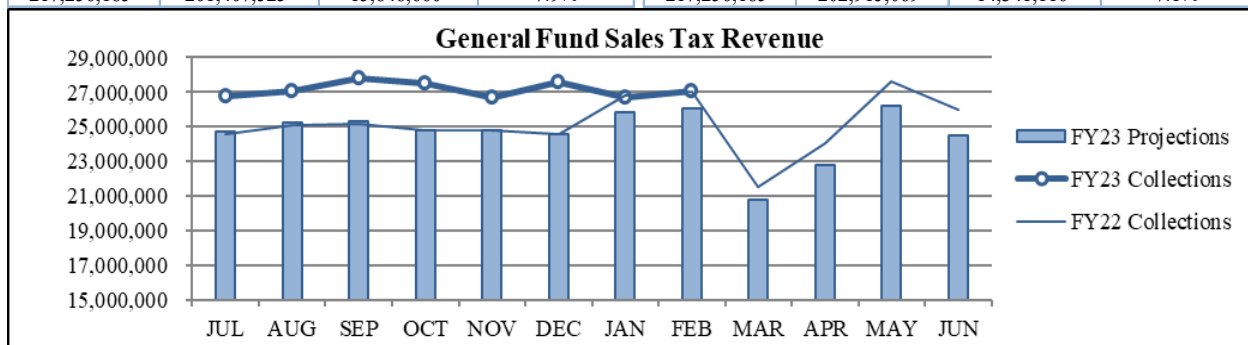
**TO:** THE MAYOR AND MEMBERS OF THE CITY COUNCIL

**SUBJECT:** FEBRUARY 2023 SALES AND USE TAX COLLECTIONS

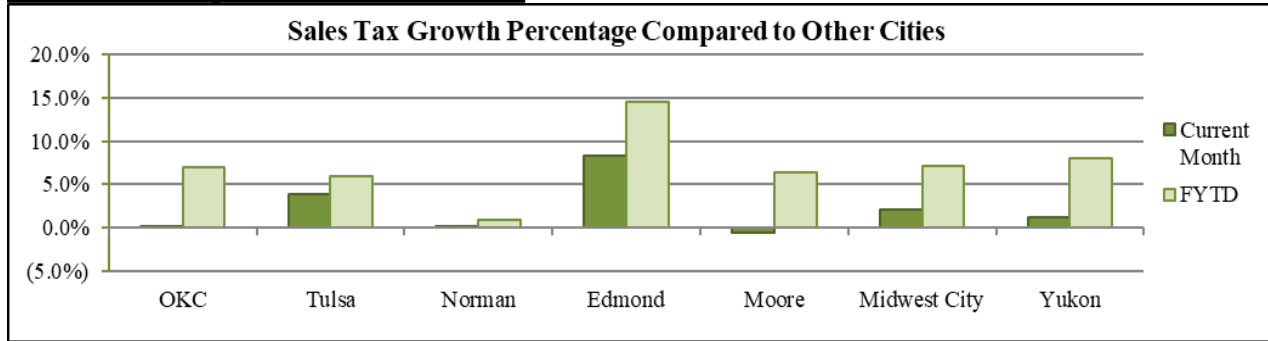
The February remittance is made up primarily of actual collections for the last half of December and estimated collections for the first half of January along with smaller amounts for corrections and reconciling amounts from prior estimates. Combined sales and use taxes for the General Fund are \$17,464,589 or 6.6% above projections for the year.

### General Fund Sales Tax

SALES TAX PERFORMANCE <i>(vs Projection)</i>				SALES TAX PERFORMANCE <i>(vs Prior Year)</i>			
Feb. FY23	Projection	\$ Diff	% Change	Feb. FY23	Feb. FY22	\$ Diff	% Change
27,064,184	26,069,902	994,282	3.8%	27,064,184	27,015,443	48,741	0.2%
YTD FY23	YTD Proj	\$ Diff	% Change	YTD FY23	YTD FY22	\$ Diff	% Change
217,256,185	201,407,525	15,848,660	7.9%	217,256,185	202,915,069	14,341,116	7.1%



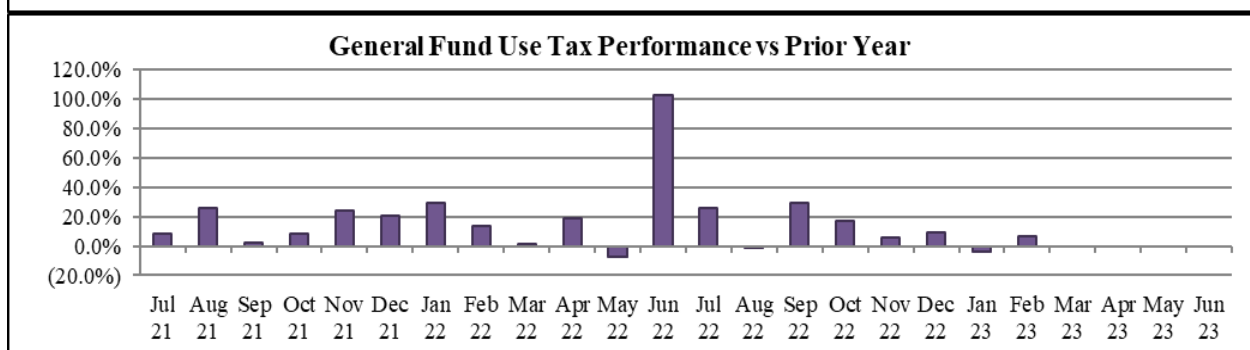
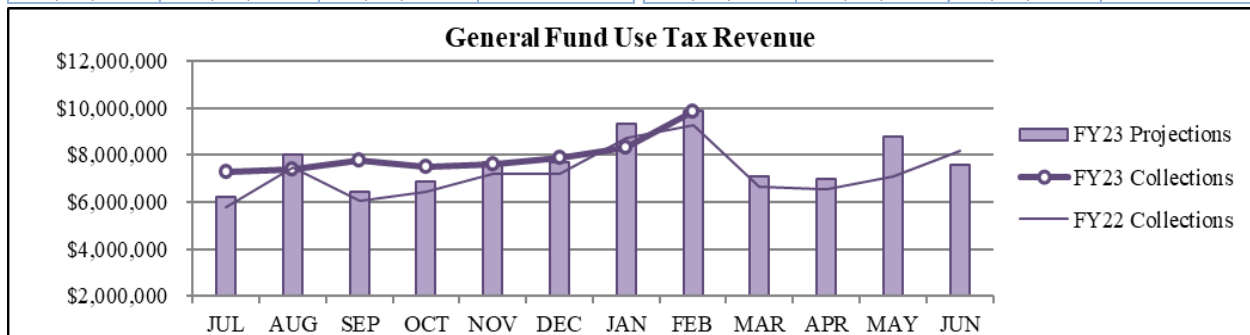
## Sales Tax Comparison to Other Cities



Edmond sale tax rate increased by .25% beginning January 1, 2022.

## General Fund Use Tax

USE TAX PERFORMANCE (vs Projection)				USE TAX PERFORMANCE (vs Prior Year)			
Feb. FY23	Projection	\$ Diff	% Change	Feb. FY23	Feb. FY22	\$ Diff	% Change
9,828,002	9,881,831	(53,829)	-0.5%	9,828,002	9,256,118	571,884	6.2%
YTD FY23	YTD Proj	\$ Diff	% Change	YTD FY23	YTD FY22	\$ Diff	% Change
63,694,233	62,078,304	1,615,929	2.6%	63,694,233	58,147,532	5,546,701	9.5%

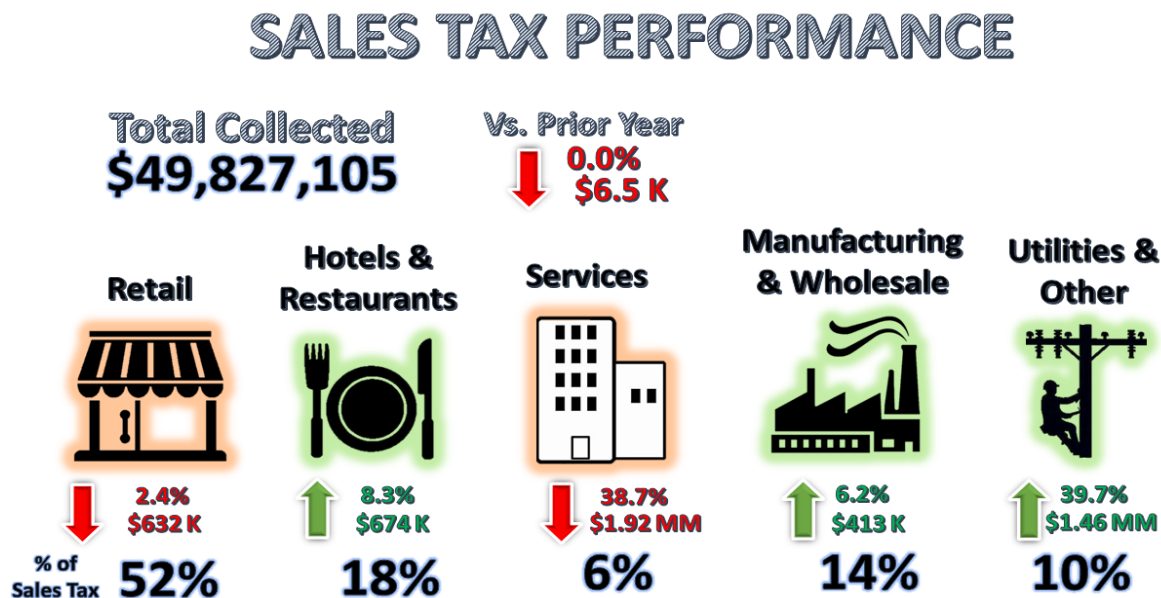


## NAICS Categories Performance

The North American Industry Classification System (NAICS) is the U.S. standard for categorizing and describing types of businesses when analyzing economic information. The City groups all NAICS codes into several general categories when analyzing sales and use tax trends within the local economy. The NAICS system was last updated in 2017. More information can be found on the U.S. Census Bureau website at <https://www.census.gov/eos/www/naics/>.

## Sales Tax NAICS Performance

Retail comprises the largest percentage of sales tax collections at around 52%. The largest year-over-year category changes for February were in Services (down \$1.9 million\*) and Utilities and Other (up \$1.5 million).



\*\$2 million dollars in refunds for services from 2020.

NAICS SALES TAX PERFORMANCE (vs Prior Year)				
NAICS Category	Feb. FY23	Feb. FY22	\$ Diff	% Change
Services	3,047,275	4,970,301	(1,923,026)	-38.7%
Utilities & Other	5,145,676	3,683,867	1,461,809	39.7%
Hotels & Restaurants	8,832,365	8,158,478	673,887	8.3%
Retail	25,686,697	26,318,748	(632,051)	-2.4%
Wholesale & Mfg.	7,115,091	6,702,198	412,893	6.2%
Total	49,827,105	49,833,592	(6,488)	-0.0%

Percentages may differ from General Fund Tax Performance since NAICS detail includes interest, penalty, retention, and reallocation amounts.

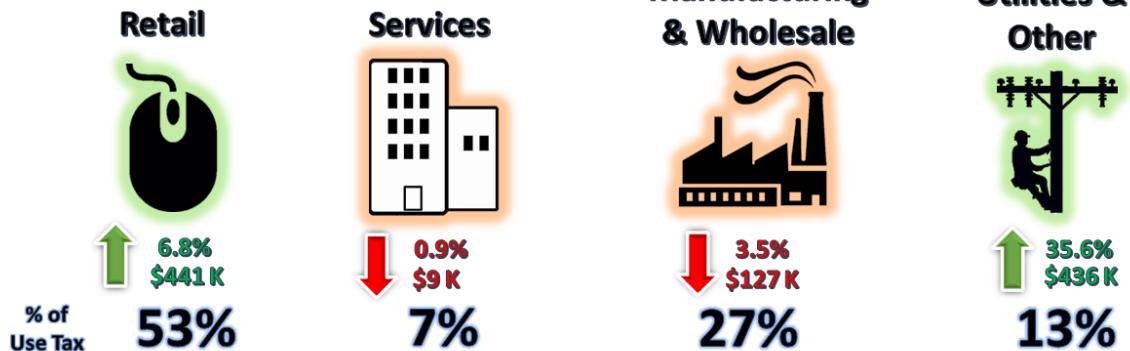
## Use Tax NAICS Performance

Retail also comprises the largest percentage of use tax collections. The largest year-over-year category changes for February were in Retail (up \$441 thousand) and Utilities and Other (up \$436 thousand).

# USE TAX PERFORMANCE

**Total Collected**  
**\$13,023,493**

**Vs. Prior Year**  
**↑ 6.0%**  
**\$741 K**



NAICS USE TAX PERFORMANCE (vs Prior Year)				
NAICS Category	Feb. FY23	Feb. FY22	\$ Diff	% Change
Retail	6,908,860	6,467,485	441,375	6.8%
Utilities & Other	1,658,370	1,222,747	435,623	35.6%
Wholesale & Mfg.	3,484,381	3,611,607	(127,226)	-3.5%
Services	974,883	983,889	(9,006)	-0.9%
Total	13,026,493	12,285,727	740,766	6.0%

*Percentages may differ from General Fund Tax Performance since NAICS detail includes interest, penalty, retention, and reallocation amounts.*

Staff is available should you have questions or require additional information.

Craig Freeman  
City Manager