



City Manager Report

The City of OKLAHOMA CITY

NO: 1735

DATE: AUGUST 31, 2021

TO: THE MAYOR AND MEMBERS OF THE CITY COUNCIL

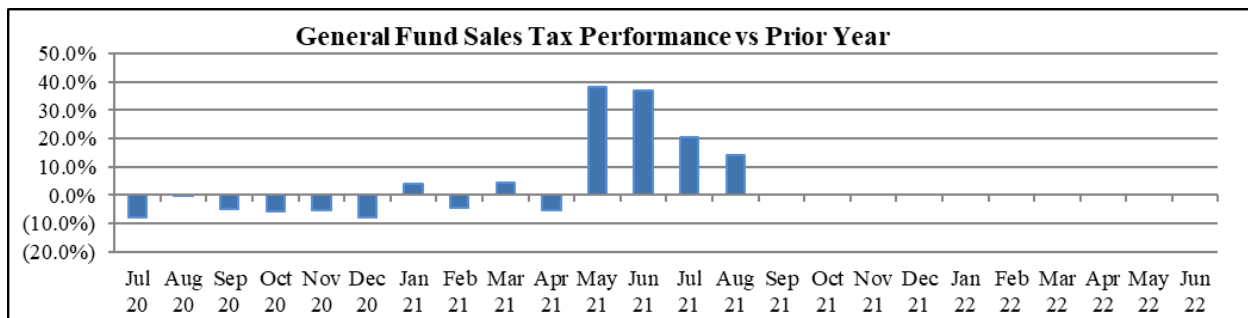
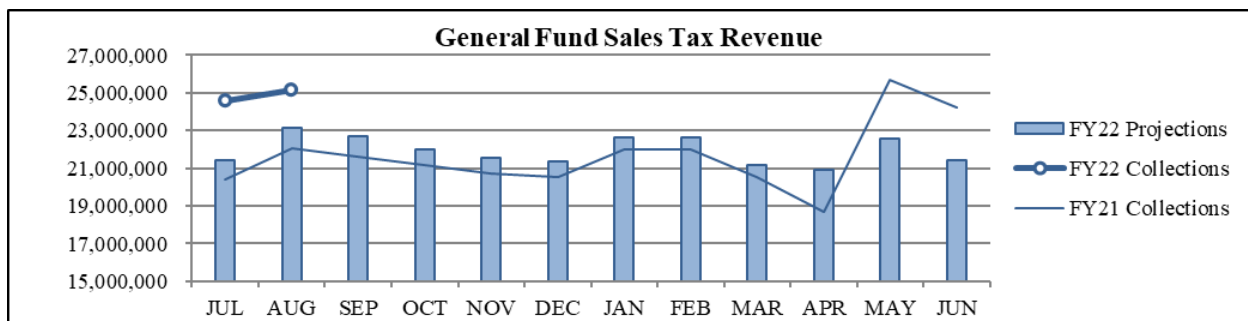
SUBJECT: AUGUST 2021 SALES AND USE TAX COLLECTIONS

The August remittance is made up primarily of actual collections for the last half of June and estimated collections for the first half of July along with smaller amounts for corrections and reconciling amounts from prior estimates. Combined sales and use taxes for the General Fund are \$5,995,239 or 10.5% above projections for the year.

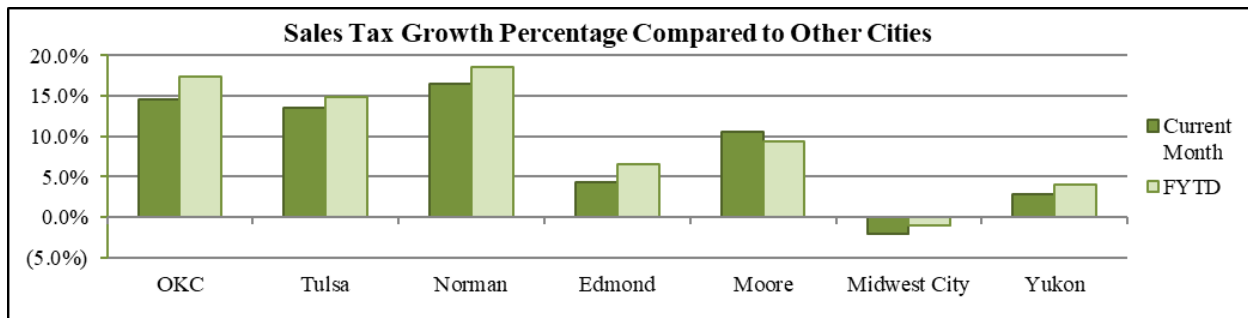
General Fund Sales Tax

SALES TAX PERFORMANCE <i>(vs Projection)</i>			
Aug. FY22	Projection	\$ Diff	% Change
25,132,393	23,145,168	1,987,225	8.6%
YTD FY22	YTD Proj	\$ Diff	% Change
49,737,438	44,567,840	5,169,598	11.6%

SALES TAX PERFORMANCE <i>(vs Prior Year)</i>			
Aug. FY22	Aug. FY21	\$ Diff	% Change
25,132,393	22,043,017	3,089,376	14.0%
YTD FY22	YTD FY21	\$ Diff	% Change
49,737,438	42,445,562	7,291,876	17.2%



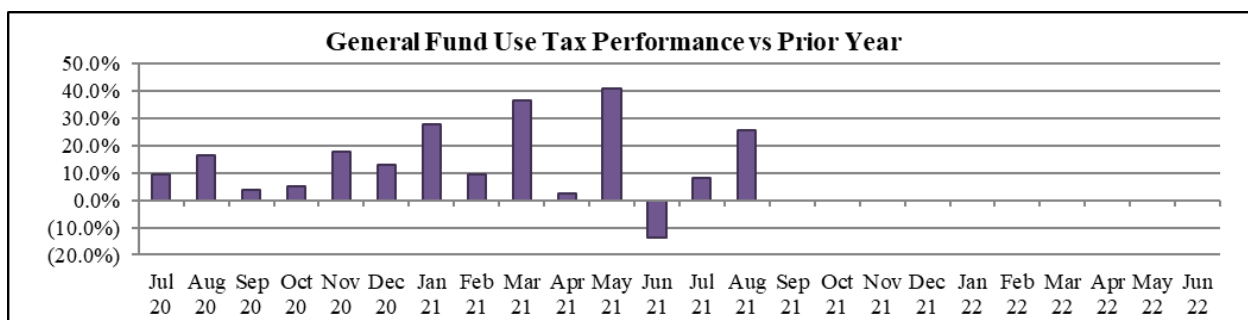
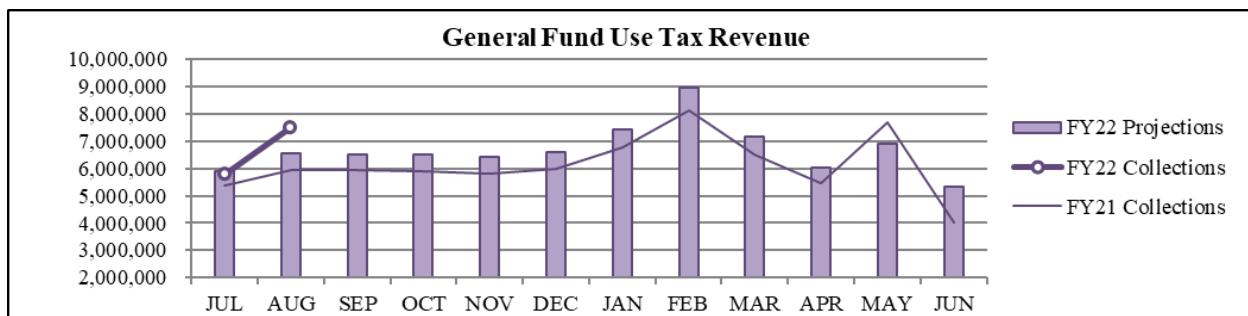
Sales Tax Comparison to Other Cities



General Fund Use Tax

USE TAX PERFORMANCE <i>(vs Projection)</i>			
Aug. FY22	Projection	\$ Diff	% Change
7,495,020	6,559,277	935,743	14.3%
YTD FY22	YTD Proj	\$ Diff	% Change
13,298,425	12,472,784	825,641	6.6%

USE TAX PERFORMANCE <i>(vs Prior Year)</i>			
Aug. FY22	Aug. FY21	\$ Diff	% Change
7,495,020	5,962,979	1,532,041	25.7%
YTD FY22	YTD FY21	\$ Diff	% Change
13,298,425	11,338,894	1,959,531	17.3%



NAICS Categories Performance

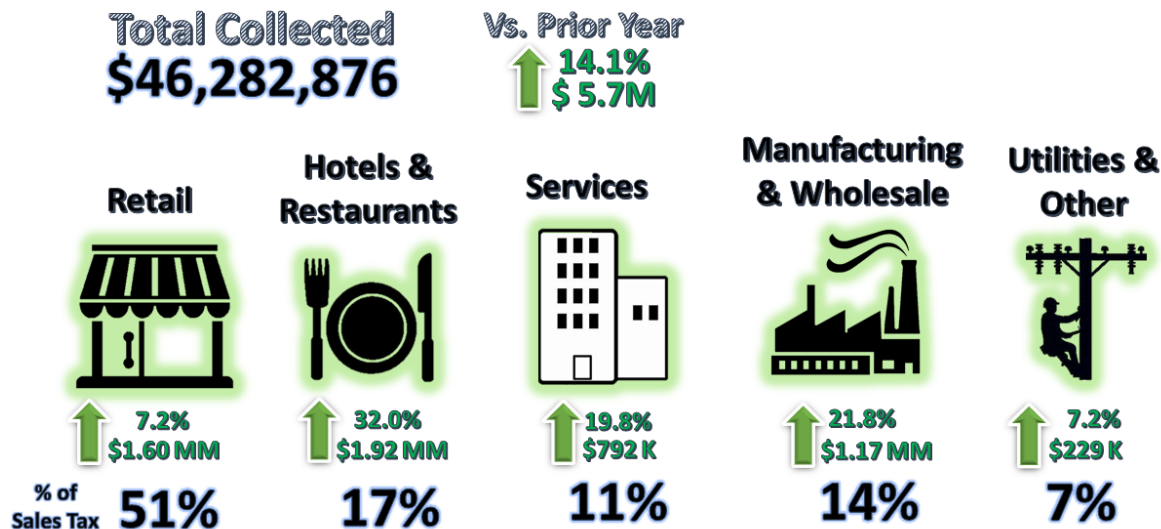
The North American Industry Classification System (NAICS) is the U.S. standard for categorizing and describing types of businesses when analyzing economic information. The City groups all NAICS codes into several general categories when analyzing sales and use tax trends within the local economy. The NAICS system was last updated in 2017. More information can

be found on the U.S. Census Bureau website at <https://www.census.gov/eos/www/naics/>.

Sales Tax NAICS Performance

Retail comprises the largest percentage of sales tax collections at around 51%. The largest year-over-year category changes for August were in Hotels & Restaurants (up \$1.9 million), Retail (up \$1.6 million), and Manufacturing & Wholesale (up \$1.2 million).

SALES TAX PERFORMANCE



NAICS SALES TAX PERFORMANCE (vs Prior Year)				
NAICS Category	Aug. FY22	Aug. FY21	\$ Diff	% Change
Hotels & Restaurants	7,900,013	5,983,973	1,916,040	32.0%
Retail	23,652,333	22,056,101	1,596,232	7.2%
Wholesale & Mfg.	6,547,768	5,375,658	1,172,110	21.8%
Services	4,791,550	3,999,302	792,248	19.8%
Utilities & Other	3,391,212	3,161,990	229,222	7.2%
Total	46,282,876	40,577,024	5,705,853	14.1%

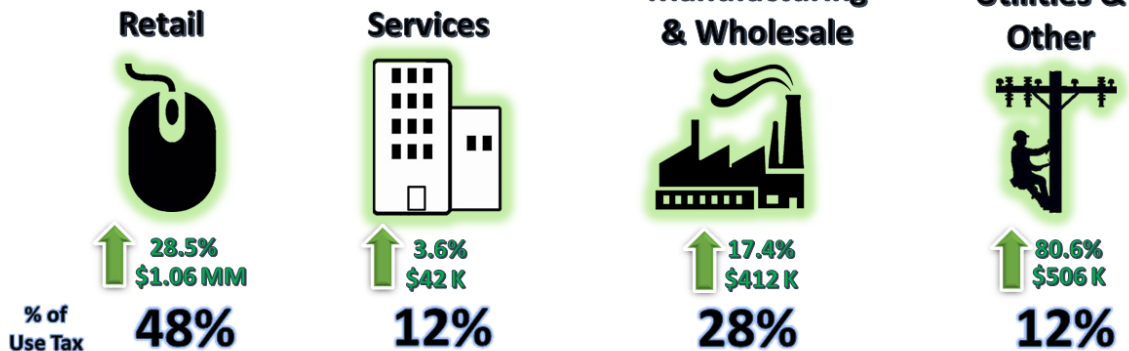
Use Tax NAICS Performance

Retail also comprises the largest percentage of use tax collections. The largest year-over-year category changes for August were in Retail (up \$1.06 million) and Utilities & Other (up \$506 thousand).

USE TAX PERFORMANCE


Total Collected
\$9,925,172

Vs. Prior Year
↑ 25.6%
\$2.0 MM



NAICS USE TAX PERFORMANCE (vs Prior Year)				
NAICS Category	Aug. FY22	Aug. FY21	\$ Diff	% Change
Retail	4,789,310	3,725,873	1,063,437	28.5%
Utilities & Other	1,133,731	627,844	505,888	80.6%
Wholesale & Mfg.	2,787,728	2,375,497	412,231	17.4%
Services	1,214,402	1,172,598	41,804	3.6%
Total	9,925,172	7,901,812	2,023,360	25.6%

Staff is available should you have questions or require additional information.


Craig Freeman
City Manager

CITY OF OKLAHOMA CITY
SALES TAX COLLECTIONS
August 2021

	<u>General Fund</u>	<u>General Fund MAPS 4 Program</u>	<u>Police Public Safety</u>	<u>Fire Public Safety</u>	<u>Zoo</u>	<u>Better Streets Safer City</u>	<u>MAPS 3</u>	<u>Sports Facilities Improvement</u>	<u>MAPS for Kids</u>	<u>Police/Fire Equipment</u>	<u>MAPS</u>	<u>Total Sales Tax</u>
Current Month:												
Actual	\$25,132,910	\$11,170,182	\$4,188,818	\$4,188,818	\$1,396,273	-	-	-	-	-	-	\$46,077,002
Reallocations	(\$517)	(\$39,381)	\$103	\$103	\$34	\$35,104	\$4,060	\$256	\$209	\$28	-	-
Adjusted Actual	\$25,132,393	\$11,130,801	\$4,188,922	\$4,188,922	\$1,396,307	\$35,104	\$4,060	\$256	\$209	\$28	-	\$46,077,002
Projection	\$23,145,168	\$10,286,741	\$3,857,528	\$3,857,528	\$1,285,843	-	-	-	-	-	-	\$42,432,808
+/- Projection	\$1,987,225	\$844,060	\$331,394	\$331,394	\$110,464	\$35,104	\$4,060	\$256	\$209	\$28	-	\$3,644,193
%+/- Projection	8.6%	8.2%	8.6%	8.6%	8.6%	-	-	-	-	-	-	8.6%
Prior Year Actual	\$22,043,017	\$9,570,645	\$3,674,124	\$3,674,124	\$1,224,708	\$220,183	\$5,984	\$80	\$650	\$7	\$82	\$40,413,607
+/- Prior Year	\$3,089,376	\$1,560,156	\$514,797	\$514,797	\$171,599	(\$185,079)	(\$1,925)	\$176	(\$440)	\$20	(\$82)	\$5,663,395
%+/- Prior Year	14.0%	16.3%	14.0%	14.0%	14.0%	-84.1%	-32.2%	218.6%	-67.8%	270.3%	-100.0%	14.0%
Year-to-Date:												
Actual	\$49,738,735	\$22,106,104	\$8,289,789	\$8,289,789	\$2,763,263	-	-	-	-	-	-	\$91,187,680
Reallocations	(\$1,297)	(\$69,425)	\$259	\$259	\$86	\$58,706	\$10,228	\$680	\$413	\$89	-	-
Adjusted Actual	\$49,737,438	\$22,036,679	\$8,290,048	\$8,290,048	\$2,763,349	\$58,706	\$10,228	\$680	\$413	\$89	-	\$91,187,680
Projection	\$44,567,840	\$19,807,929	\$7,427,973	\$7,427,973	\$2,475,991	-	-	-	-	-	-	\$81,707,706
+/- Projection	\$5,169,598	\$2,228,750	\$862,075	\$862,075	\$287,358	\$58,706	\$10,228	\$680	\$413	\$89	-	\$9,479,974
%+/- Projection	11.6%	11.3%	11.6%	11.6%	11.6%	-	-	-	-	-	-	11.6%
Prior Year Actual	\$42,445,562	\$18,197,621	\$7,074,980	\$7,074,980	\$2,358,327	\$651,883	\$15,736	\$120	\$1,029	\$15	\$171	\$77,820,423
+/- Prior Year	\$7,291,876	\$3,839,059	\$1,215,068	\$1,215,068	\$405,023	(\$593,176)	(\$5,508)	\$560	(\$616)	\$75	(\$171)	\$13,367,258
%+/- Prior Year	17.2%	21.1%	17.2%	17.2%	17.2%	-91.0%	-35.0%	464.7%	-59.9%	500.9%	-100.0%	17.2%
	(1)					(2)	(3)	(3)	(3)	(3)	(3)	(4)

NOTES:

(1) The **General Fund MAPS 4 Program** tax began on April 1, 2020

(2) The **Better Streets Safer City** tax began January 1, 2018. It replaced the MAPS 3 tax that expired December 31, 2017.

(3) The **MAPS 3, Sports Facilities Improvement, Maps for Kids, Police/Fire Equipment** and **MAPS** taxes expired in prior years, therefore, only current year reallocation activity is presented for these funds.

(4) The percentages listed will differ from those on the Sales and Use Tax City Manager Report slightly due to the inclusion of administrative fee, interest and reallocation on that report.

CITY OF OKLAHOMA CITY
USE TAX COLLECTIONS
August 2021

	<u>General Fund</u>	<u>MAPS 4 Program</u>	<u>Better Streets Safer City</u>	<u>MAPS 3</u>	<u>Sports Facilities Improvement</u>	<u>City & Schools</u>	<u>Police/Fire Equipment</u>	<u>MAPS</u>	<u>Total Use Tax</u>
Current Month:									
Actual	\$7,485,442	\$2,395,342	-	-	-	-	-	-	\$9,880,784
Reallocations	\$9,578	\$149,196	(\$738)	(\$13,549)	(\$144,487)	-	-	-	-
Adjusted Actual	\$7,495,020	\$2,544,537	(\$738)	(\$13,549)	(\$144,487)	-	-	-	\$9,880,784
Projection	\$6,559,277	\$2,098,969	-	-	-	-	-	-	\$8,658,246
+/- Projection	\$935,743	\$445,569	(\$738)	(\$13,549)	(\$144,487)	-	-	-	\$1,222,538
%+/- Projection	14.3%	21.2%	-	-	-	-	-	-	14.1%
Prior Year Actual	\$5,962,979	\$1,909,386	(\$1,649)	\$453	-	\$0	-	-	\$7,871,168
+/- Prior Year	\$1,532,041	\$635,151	\$912	(\$14,002)	(\$144,487)	(\$0)	-	-	\$2,009,616
%+/- Prior Year	25.7%	33.3%	-55.3%	3094.0%	-	-100.0%	-	-	25.5%
Year-to-Date:									
Actual	\$13,232,611	\$4,234,435	-	-	-	-	-	-	\$17,467,046
Reallocations	\$65,815	\$1,002,191	\$17,928	(\$941,205)	(\$144,731)	\$3	-	-	-
Adjusted Actual	\$13,298,425	\$5,236,626	\$17,928	(\$941,205)	(\$144,731)	\$3	-	-	\$17,467,046
Projection	\$12,472,784	\$3,991,291	-	-	-	-	-	-	\$16,464,075
+/- Projection	\$825,641	\$1,245,335	\$17,928	(\$941,205)	(\$144,731)	\$3	-	-	\$1,002,971
%+/- Projection	6.6%	31.2%	-	-	-	-	-	-	6.1%
Prior Year Actual	\$11,338,894	\$3,612,968	\$33,029	(\$19,078)	-	\$0	-	-	\$14,965,814
+/- Prior Year	\$1,959,531	\$1,623,658	(\$15,101)	(\$922,128)	(\$144,731)	\$3	-	-	\$2,501,232
%+/- Prior Year	17.3%	44.9%	-45.7%	4833.6%	-	26600.0%	-	-	16.7%
		(1)	(2)	(3)	(3)	(3)	(3)	(3)	(4)

NOTES:

- (1) The **MAPS 4 Program** tax began on April 1, 2020
- (2) The **Better Streets Safer City** tax began January 1, 2018. It replaced the MAPS 3 tax that expired December 31, 2017.
- (3) The **MAPS 3, Sports Facilities Improvement, City & Schools, Police/Fire Equipment** and **MAPS** taxes expired in prior years, therefore, only current year reallocation activity is presented for these funds.
- (4) The percentages listed will differ from those on the Sales and Use Tax City Manager Report slightly due to the inclusion of administrative fee, interest and reallocation on that report.