



City Manager Report

The City of OKLAHOMA CITY

NO: 1709

DATE: JUNE 22, 2021

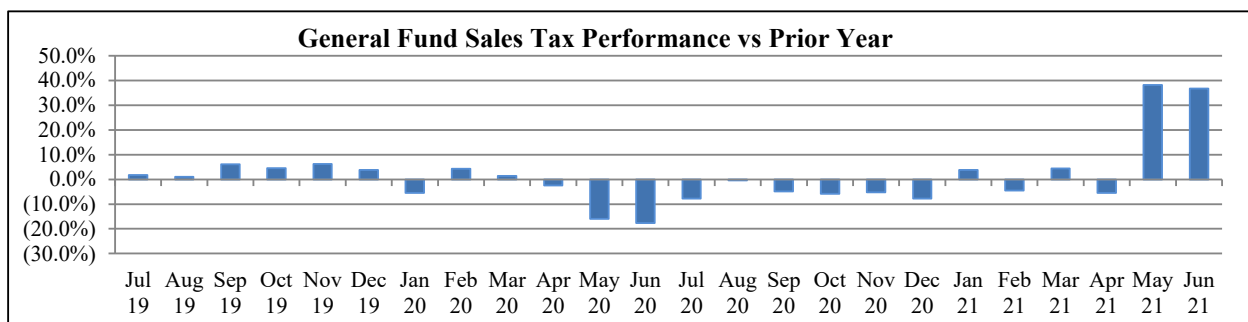
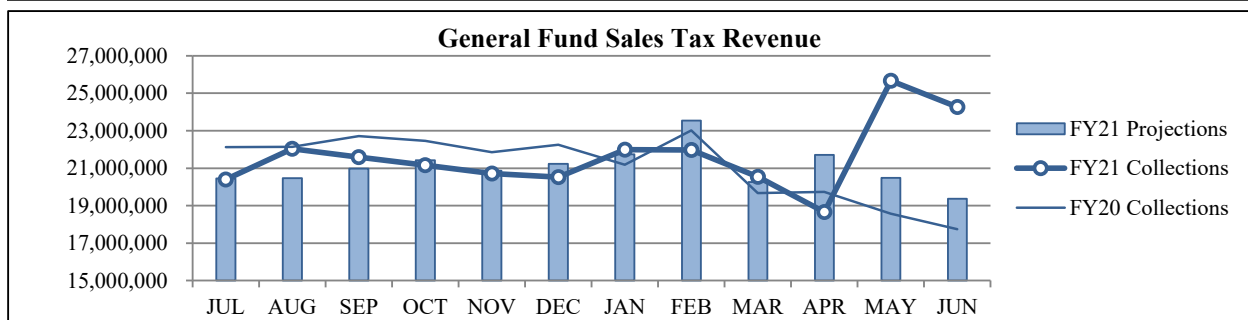
TO: THE MAYOR AND MEMBERS OF THE CITY COUNCIL

SUBJECT: JUNE 2021 SALES AND USE TAX COLLECTIONS

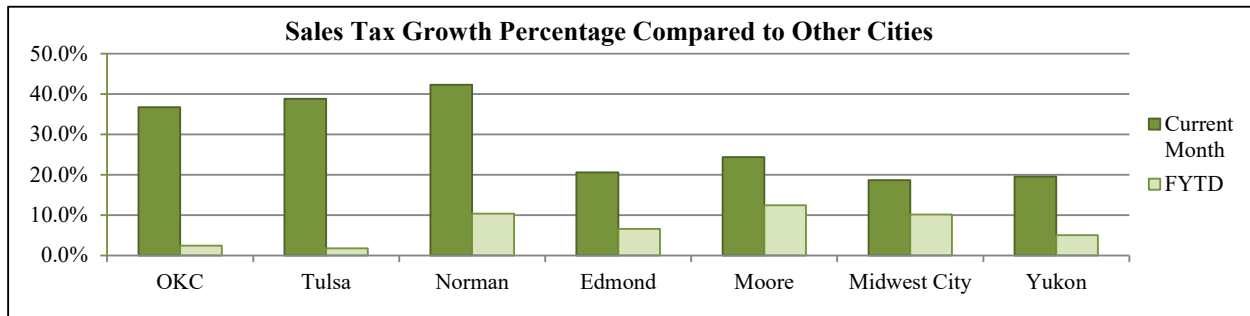
The June remittance is made up primarily of actual collections for the last half of April and estimated collections for the first half of May along with smaller amounts for corrections and reconciling amounts from prior estimates. Combined sales and use taxes for the General Fund are \$8,563,891 or 2.6% above projections for the year.

General Fund Sales Tax

SALES TAX PERFORMANCE <i>(vs Projection)</i>				SALES TAX PERFORMANCE <i>(vs Prior Year)</i>			
June FY21	Projection	\$ Diff	% Change	June FY21	June FY20	\$ Diff	% Change
24,259,176	19,373,004	4,886,172	25.2%	24,259,176	17,738,184	6,520,992	36.8%
YTD FY21	YTD Proj	\$ Diff	% Change	YTD FY21	YTD FY20	\$ Diff	% Change
259,536,257	252,523,459	7,012,798	2.8%	259,536,257	253,456,228	6,080,029	2.4%

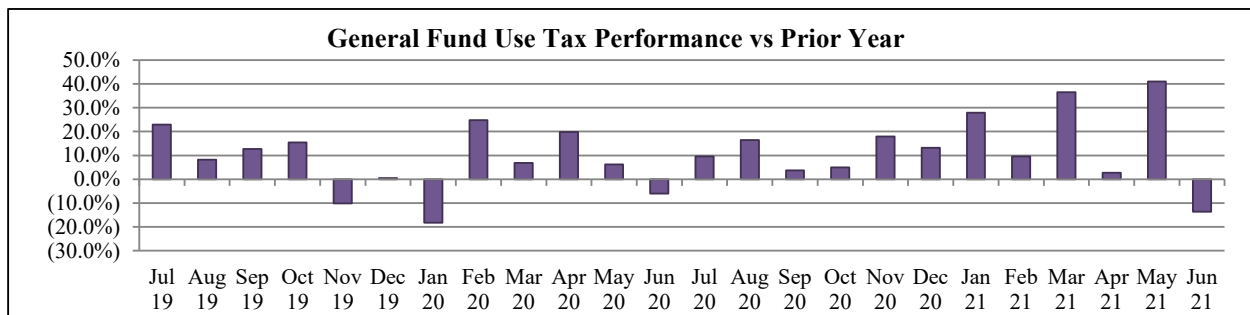
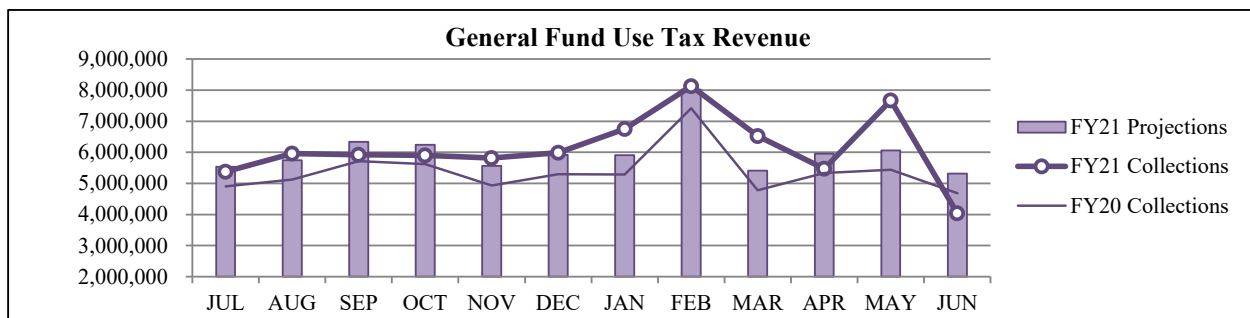


Sales Tax Comparison to Other Cities



General Fund Use Tax

USE TAX PERFORMANCE (vs Projection)				USE TAX PERFORMANCE (vs Prior Year)			
June FY21	Projection	\$ Diff	% Change	June FY21	June FY20	\$ Diff	% Change
4,041,284	5,314,054	(1,272,770)	-24.0%	4,041,284	4,681,770	(640,486)	-13.7%
YTD FY21	YTD Proj	\$ Diff	% Change	YTD FY21	YTD FY20	\$ Diff	% Change
73,573,274	72,022,181	1,551,093	2.2%	73,573,274	64,525,815	9,047,459	14.0%



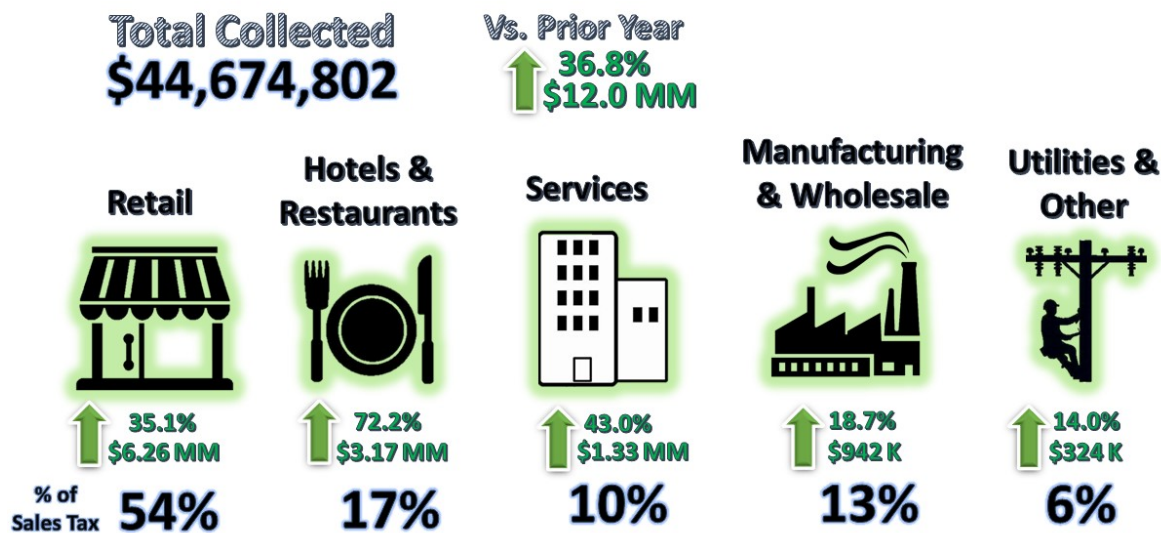
NAICS Categories Performance

The North American Industry Classification System (NAICS) is the U.S. standard for categorizing and describing types of businesses when analyzing economic information. The City groups all NAICS codes into several general categories when analyzing sales and use tax trends within the local economy. The NAICS system was last updated in 2017. More information can be found on the U.S. Census Bureau website at <https://www.census.gov/eos/www/naics/>.

Sales Tax NAICS Performance

Retail comprises the largest percentage of sales tax collections at around 54%. The largest year-over-year category changes for June were in Retail (up \$6.3 million), Hotels & Restaurants (up \$3.2 million), Services (up \$1.3 million) and Manufacturing & Wholesale (up \$942 thousand).

SALES TAX PERFORMANCE



NAICS SALES TAX PERFORMANCE (vs Prior Year)				
NAICS Category	June FY21	June FY20	\$ Diff	% Change
Retail	24,063,910	17,805,833	6,258,077	35.1%
Hotels & Restaurants	7,567,896	4,396,105	3,171,791	72.2%
Services	4,408,420	3,082,811	1,325,609	43.0%
Wholesale & Mfg.	5,990,877	5,048,722	942,155	18.7%
Utilities & Other	2,643,699	2,320,006	323,692	14.0%
Total	44,674,802	32,653,478	12,021,324	36.8%

Use Tax NAICS Performance

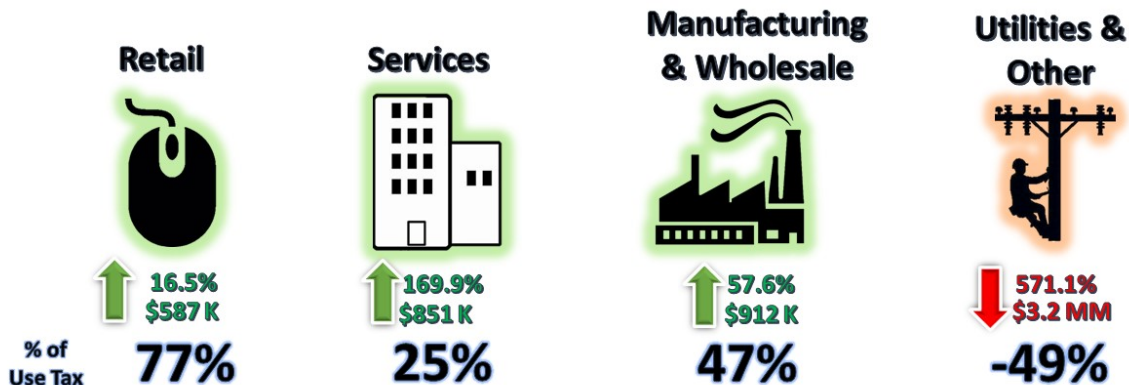
Retail also comprises the largest percentage of use tax collections. The largest year-over-year category changes for June were in Utilities & Other (Down \$3.2 million) due to a large multiyear refund. This was offset by Manufacturing & Wholesale (up \$912 thousand) and Services (up \$851 thousand).

USE TAX PERFORMANCE

Total Collected
\$5,355,760

Vs. Prior Year

↓ 13.7%
\$849 K



NAICS USE TAX PERFORMANCE (vs Prior Year)				
NAICS Category	June FY21	June FY20	\$ Diff	% Change
Utilities & Other	(2,639,320)	560,268	(3,199,588)	-571.1%
Wholesale & Mfg.	2,496,803	1,584,112	912,690	57.6%
Services	1,352,265	501,072	851,193	169.9%
Retail	4,146,383	3,559,760	586,623	16.5%
Total	5,356,131	6,205,213	(849,082)	-13.7%

Staff is available should you have questions or require additional information.

Craig Freeman
City Manager

CITY OF OKLAHOMA CITY
SALES TAX COLLECTIONS
June 2021

	<u>General Fund</u>	<u>General Fund MAPS 4 Program</u>	<u>Police Public Safety</u>	<u>Fire Public Safety</u>	<u>Zoo</u>	<u>Better Streets Safer City</u>	<u>MAPS 3</u>	<u>Sports Facilities Improvement</u>	<u>MAPS for Kids</u>	<u>Police/Fire Equipment</u>	<u>MAPS</u>	<u>Total Sales Tax</u>
Current Month:												
Actual	\$24,260,426	\$10,782,411	\$4,043,404	\$4,043,404	\$1,347,801	-	-	-	-	-	-	\$44,477,447
Reallocations	(\$1,249)	\$9,268	\$256	\$256	\$85	(\$19,834)	\$15,045	(\$3,601)	(\$242)	\$15	-	-
Adjusted Actual	\$24,259,176	\$10,791,679	\$4,043,660	\$4,043,660	\$1,347,887	(\$19,834)	\$15,045	(\$3,601)	(\$242)	\$15	-	\$44,477,447
Projection	\$19,373,004	\$8,173,185	\$3,075,917	\$3,075,917	\$1,031,639	-	-	-	-	-	-	\$34,729,662
+/- Projection	\$4,886,172	\$2,618,494	\$967,743	\$967,743	\$316,248	(\$19,834)	\$15,045	(\$3,601)	(\$242)	\$15	-	\$9,747,785
% +/- Projection	25.2%	32.0%	31.5%	31.5%	30.7%	-	-	-	-	-	-	28.1%
Prior Year Actual	\$17,738,184	\$7,510,430	\$2,956,502	\$2,956,502	\$985,501	\$370,340	\$2,343	\$244	\$541	\$40	\$67	\$32,520,694
+/- Prior Year	\$6,520,992	\$3,281,249	\$1,087,158	\$1,087,158	\$362,386	(\$390,173)	\$12,702	(\$3,845)	(\$783)	(\$24)	(\$67)	\$11,956,753
% +/- Prior Year	36.8%	43.7%	36.8%	36.8%	36.8%	-105.4%	542.0%	-1575.4%	-144.7%	-61.0%	-100.0%	36.8%
Year-to-Date:												
Actual	\$259,527,264	\$115,345,451	\$43,254,544	\$43,254,544	\$14,418,181	-	-	-	-	-	-	\$475,799,984
Reallocations	\$8,994	(\$1,027,258)	(\$1,392)	(\$1,392)	(\$464)	\$1,092,980	(\$60,858)	(\$14,712)	\$2,262	\$1,212	\$628	-
Adjusted Actual	\$259,536,257	\$114,318,193	\$43,253,152	\$43,253,152	\$14,417,718	\$1,092,980	(\$60,858)	(\$14,712)	\$2,262	\$1,212	\$628	\$475,799,984
Projection	\$252,523,459	\$106,988,204	\$40,120,576	\$40,120,576	\$13,746,522	-	-	-	-	-	-	\$453,499,337
+/- Projection	\$7,012,798	\$7,329,989	\$3,132,576	\$3,132,576	\$671,196	\$1,092,980	(\$60,858)	(\$14,712)	\$2,262	\$1,212	\$628	\$22,300,647
% +/- Projection	2.8%	6.9%	7.8%	7.8%	4.9%	-	-	-	-	-	-	4.9%
Prior Year Actual	\$253,456,228	\$7,510,430	\$42,232,377	\$42,232,377	\$14,077,459	\$102,054,252	(\$270,595)	\$1,227	\$10,842	\$399	\$6,537	\$461,311,533
+/- Prior Year	\$6,080,029	\$106,807,762	\$1,020,775	\$1,020,775	\$340,259	(\$100,961,271)	\$209,737	(\$15,939)	(\$8,581)	\$812	(\$5,908)	\$14,488,451
% +/- Prior Year	2.4%	1422.1%	2.4%	2.4%	2.4%	-98.9%	-77.5%	-1298.7%	-79.1%	203.5%	-90.4%	3.1%
		(1)				(2)	(3)	(3)	(3)	(3)	(3)	(4)

NOTES:

(1) The **General Fund MAPS 4 Program** tax began on April 1, 2020

(2) The **Better Streets Safer City** tax began January 1, 2018. It replaced the MAPS 3 tax that expired December 31, 2017.

(3) The **MAPS 3, Sports Facilities Improvement, Maps for Kids, Police/Fire Equipment** and **MAPS** taxes expired in prior years, therefore, only current year reallocation activity is presented for these funds.

(4) The percentages listed will differ from those on the Sales and Use Tax City Manager Report slightly due to the inclusion of administrative fee, interest and reallocation on that report.

CITY OF OKLAHOMA CITY
USE TAX COLLECTIONS
June 2021

	<u>General Fund</u>	<u>MAPS 4 Program</u>	<u>Better Streets Safer City</u>	<u>MAPS 3</u>	<u>Sports Facilities Improvement</u>	<u>City & Schools</u>	<u>Police/Fire Equipment</u>	<u>MAPS</u>	<u>Total Use Tax</u>
Current Month:									
Actual	\$4,040,036	\$1,292,811	-	-	-	-	-	-	\$5,332,847
Reallocations	\$1,248	\$15,957	\$3,388	(\$466)	(\$20,124)	(\$3)	-	-	-
Adjusted Actual	\$4,041,284	\$1,308,769	\$3,388	(\$466)	(\$20,124)	(\$3)	-	-	\$5,332,847
Projection	\$5,314,054	\$1,481,829	-	-	-	-	-	-	\$6,795,883
+/- Projection	(\$1,272,770)	(\$173,060)	\$3,388	(\$466)	(\$20,124)	(\$3)	-	-	(\$1,463,036)
%+/- Projection	-24.0%	-11.7%	-	-	-	-	-	-	-21.5%
Prior Year Actual	\$4,681,770	\$1,322,653	\$165,722	\$10,643	-	-	-	-	\$6,180,788
+/- Prior Year	(\$640,486)	(\$13,884)	(\$162,334)	(\$11,109)	(\$20,124)	(\$3)	-	-	(\$847,940)
%+/- Prior Year	-13.7%	-1.0%	-98.0%	-104.4%	-	-	-	-	-13.7%
Year-to-Date:									
Actual	\$73,560,322	\$23,539,303	-	-	-	-	-	-	\$97,099,625
Reallocations	\$12,952	\$64,712	\$135,135	(\$117,979)	(\$96,459)	\$1,636	\$3	\$0	-
Adjusted Actual	\$73,573,274	\$23,604,016	\$135,135	(\$117,979)	(\$96,459)	\$1,636	\$3	\$0	\$97,099,625
Projection	\$72,022,181	\$20,423,098	-	-	-	-	-	-	\$92,445,279
+/- Projection	\$1,551,093	\$3,180,918	\$135,135	(\$117,979)	(\$96,459)	\$1,636	\$3	\$0	\$4,654,346
%+/- Projection	2.2%	15.6%	-	-	-	-	-	-	5.0%
Prior Year Actual	\$64,525,815	\$1,322,653	\$18,825,134	(\$212,297)	(\$725)	\$301	-	\$9	\$84,460,890
+/- Prior Year	\$9,047,459	\$22,281,363	(\$18,690,000)	\$94,318	(\$95,734)	\$1,335	\$3	(\$8)	\$12,638,735
%+/- Prior Year	14.0%	1684.6%	-99.3%	-44.4%	13199.0%	444.1%	-	-95.7%	15.0%
		(1)	(2)	(3)	(3)	(3)	(3)	(3)	(4)

NOTES:

- (1) The **MAPS 4 Program** tax began on April 1, 2020
- (2) The **Better Streets Safer City** tax began January 1, 2018. It replaced the MAPS 3 tax that expired December 31, 2017.
- (3) The **MAPS 3, Sports Facilities Improvement, City & Schools, Police/Fire Equipment** and **MAPS** taxes expired in prior years, therefore, only current year reallocation activity is presented for these funds.
- (4) The percentages listed will differ from those on the Sales and Use Tax City Manager Report slightly due to the inclusion of administrative fee, interest and reallocation on that report.