



City Manager Report

The City of OKLAHOMA CITY

NO: 1409

DATE: SEPTEMBER 24, 2019

TO: THE MAYOR AND MEMBERS OF THE CITY COUNCIL

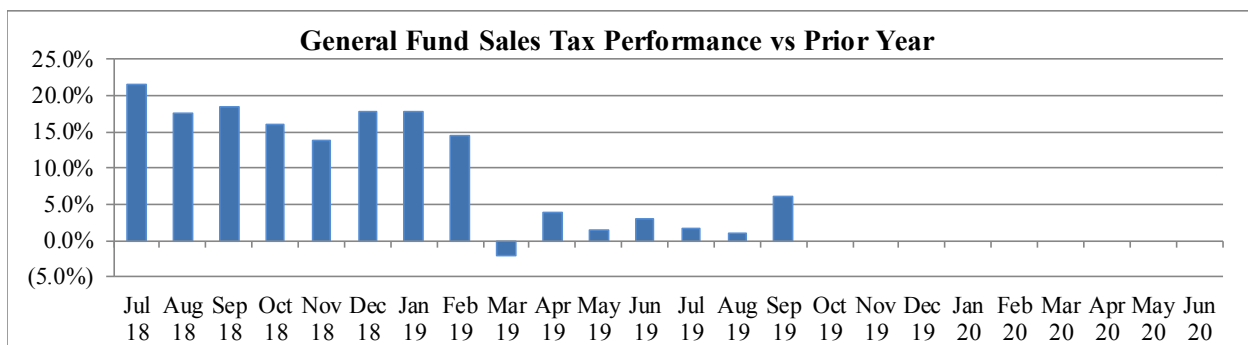
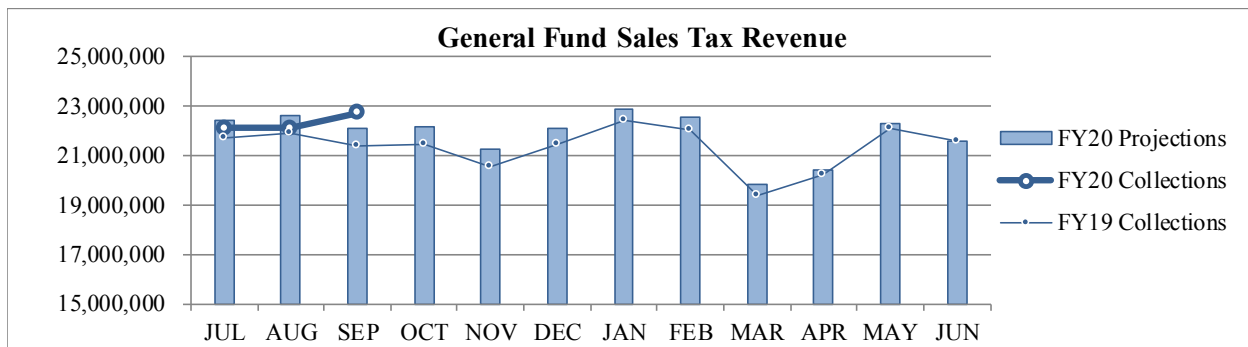
SUBJECT: SEPTEMBER 2019 SALES AND USE TAX COLLECTIONS

The majority of the September remittance includes actual collections for the second half of July and estimated collections for the first half of August. Combined sales and use taxes for the General Fund are \$1,457,666 or 1.8% above projections for the year. The quarter cent increase to the General Fund on January 1, 2018 began impacting collections in March 2018 and continued to affect year-to-year comparisons through February 2019.

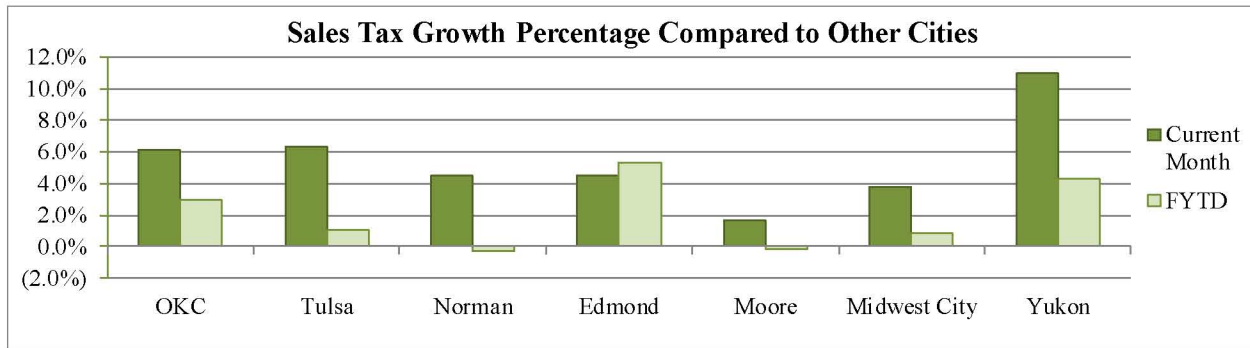
General Fund Sales Tax

SALES TAX PERFORMANCE (vs Projection)			
Sep 19	Projection	\$ Diff	% Change
22,713,439	22,093,933	619,506	2.8%
YTD FY19	YTD Proj	\$ Diff	% Change
66,966,712	67,122,567	(155,855)	(0.2%)

SALES TAX PERFORMANCE (vs Prior Year)			
Sep 19	Sep 18	\$ Diff	% Change
22,713,439	21,408,849	1,304,590	6.1%
YTD FY19	YTD FY18	\$ Diff	% Change
66,966,712	65,041,247	1,925,465	3.0%

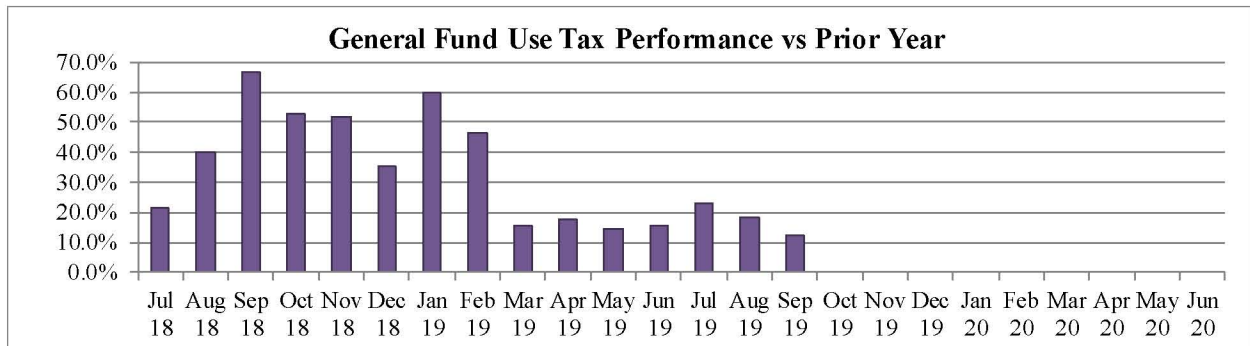
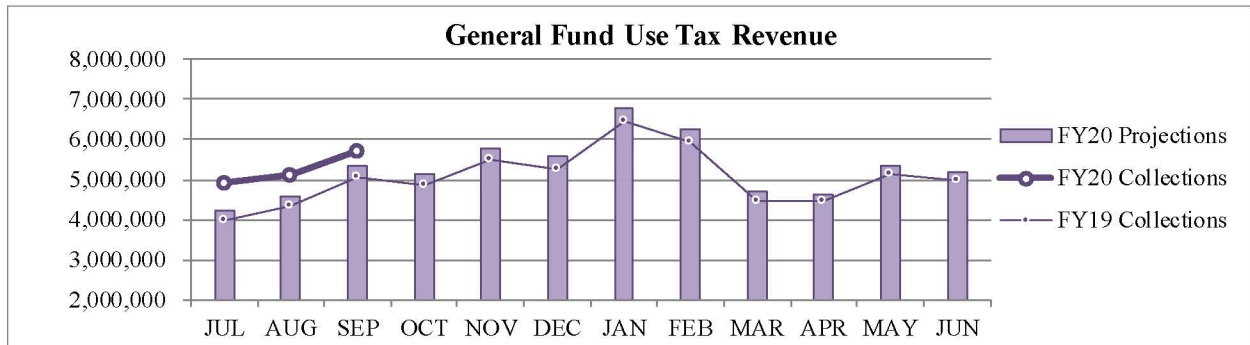


Sales Tax Comparison to Other Cities



General Fund Use Tax

USE TAX PERFORMANCE (vs Projection)				USE TAX PERFORMANCE (vs Prior Year)			
Sep 19	Projection	\$ Diff	% Change	Sep 19	Sep 18	\$ Diff	% Change
5,717,323	5,352,729	364,594	6.8%	5,717,323	5,073,677	643,646	12.7%
YTD FY19	YTD Proj	\$ Diff	% Change	YTD FY19	YTD FY18	\$ Diff	% Change
15,741,411	14,127,890	1,613,521	11.4%	15,741,411	13,391,364	2,350,047	17.5%



Staff is available should you have questions or require additional information.

Craig Freeman
City Manager