



City Manager Report

The City of OKLAHOMA CITY

NO: 1463

DATE: JANUARY 21, 2020

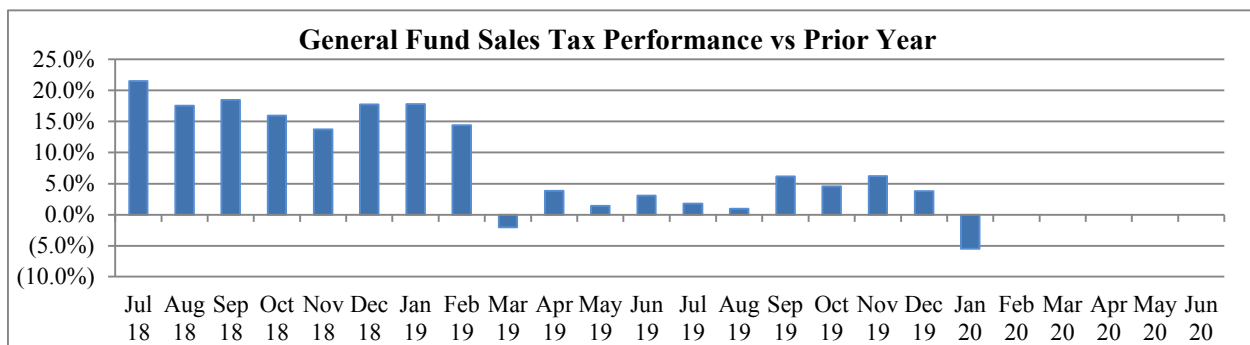
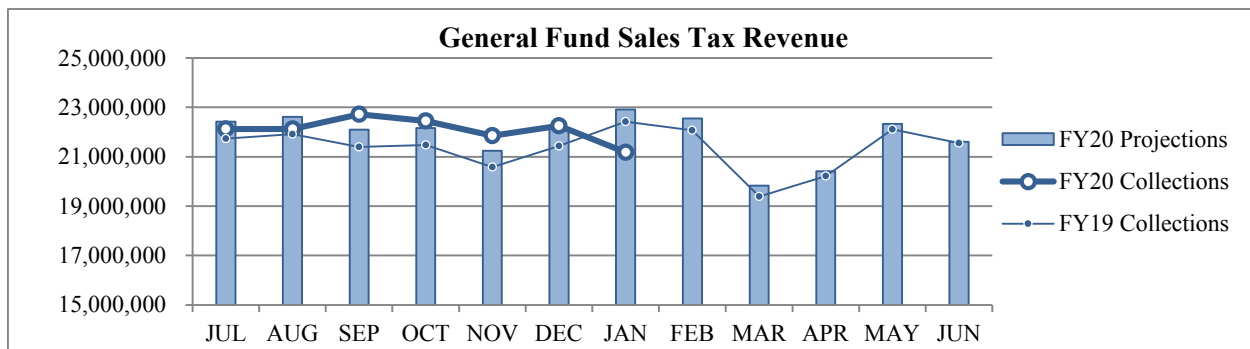
TO: THE MAYOR AND MEMBERS OF THE CITY COUNCIL

SUBJECT: JANUARY 2020 SALES AND USE TAX COLLECTIONS

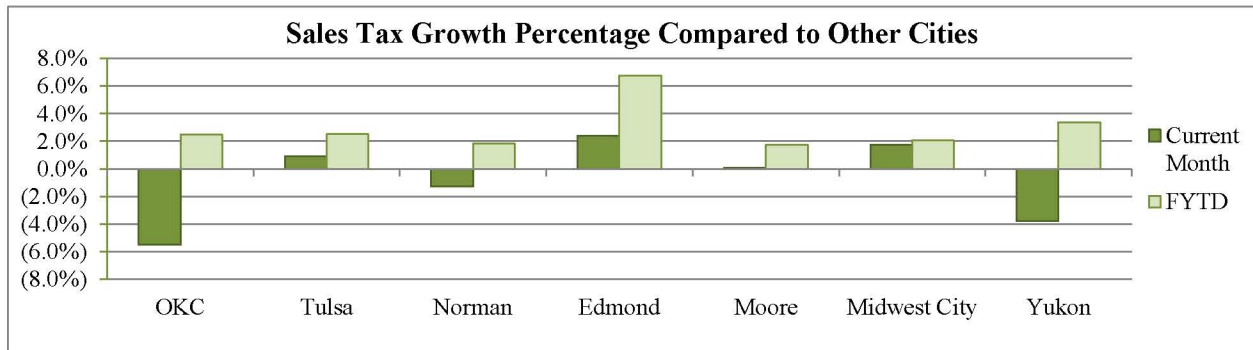
The majority of the January remittance includes actual collections for the second half of November and estimated collections for the first half of December. Combined sales and use taxes for the General Fund are \$1,362,604 or 0.7% below projections for the year. The quarter cent increase to the General Fund on January 1, 2018 began impacting collections in March 2018 and continued to affect year-to-year comparisons through February 2019.

General Fund Sales Tax

SALES TAX PERFORMANCE (vs Projection)				SALES TAX PERFORMANCE (vs Prior Year)			
Jan 20	Projection	\$ Diff	% Change	Jan 20	Jan 19	\$ Diff	% Change
21,182,291	22,907,014	(1,724,723)	(7.5%)	21,182,291	22,413,908	(1,231,617)	(5.5%)
YTD FY20	YTD Proj	\$ Diff	% Change	YTD FY20	YTD FY19	\$ Diff	% Change
154,711,948	155,541,285	(829,337)	(0.5%)	154,711,948	150,935,488	3,776,460	2.5%



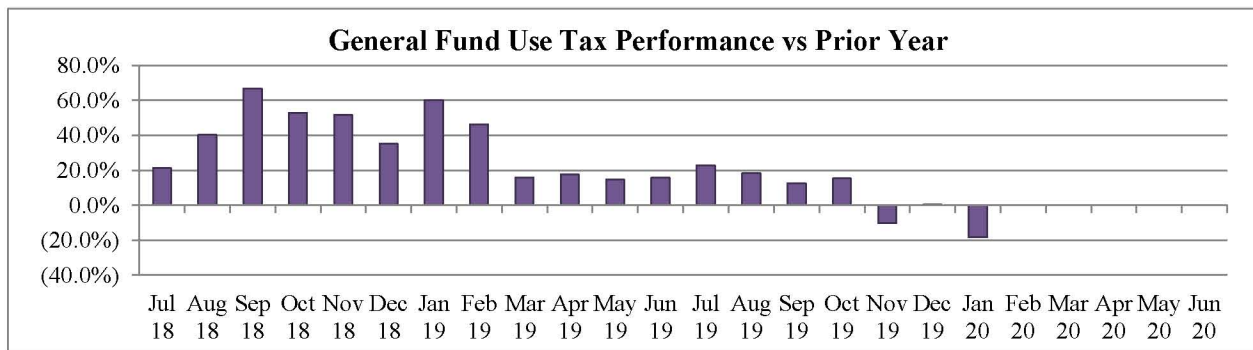
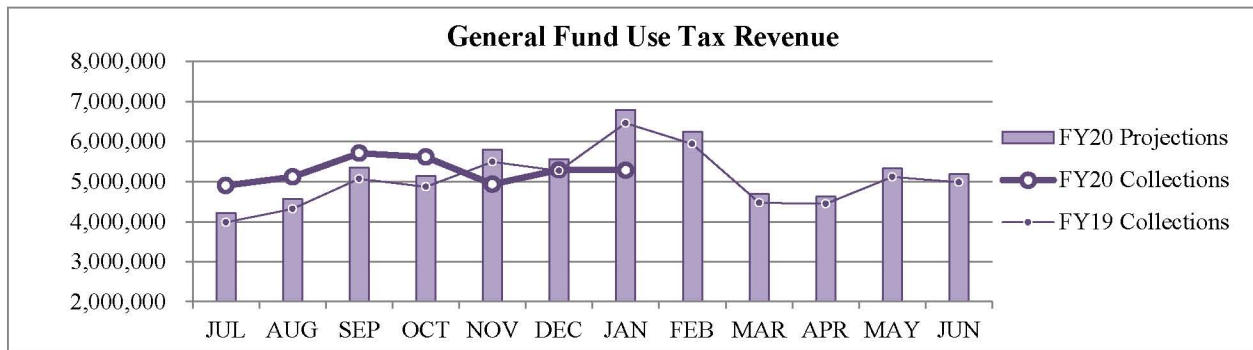
Sales Tax Comparison to Other Cities



General Fund Use Tax

USE TAX PERFORMANCE (vs Projection)			
Jan 20	Projection	\$ Diff	% Change
5,283,310	6,785,645	(1,502,335)	(22.1%)
YTD FY20	YTD Proj	\$ Diff	% Change
36,877,552	37,410,820	(533,268)	(1.4%)

USE TAX PERFORMANCE (vs Prior Year)			
Jan 20	Jan 19	\$ Diff	% Change
5,283,310	6,462,519	(1,179,209)	(18.2%)
YTD FY20	YTD FY19	\$ Diff	% Change
36,877,552	35,491,120	1,386,432	3.9%



Staff is available should you have questions or require additional information.

Craig Freeman
City Manager